

HUGHES
INSURANCE

FOYLE CUP

2016 Application Brochure



DERRY CITY & SURROUNDING TOWNS
JULY 18TH - 24TH 2016



CONTENTS

About the tournament	3
Format	4
Entry criteria.....	5
Useful Info	6
Age categories	7
Entry form	8

STAY IN TOUCH



www.facebook.com/foylecupfootball



www.twitter.com/foylecup



foylecup@me.com

(t) +44 2871 359734

The friendly face of football



A Unique Experience

The Hughes Insurance Foyle Cup is about more than the football. Join almost 3000 footballers in Derry City and surrounding areas next July and participate in Ireland's premier festival of football

Camaraderie, friendly rivalry and superb hospitality from the local population will make your visit to the 2016 tournament one to remember. The tournament is played in the Olympic spirit - "It is not always the winning that is important, it is the taking part"

Age Groups

Male players from Age 8 to 19 are accommodated in our wide range of age groups. Mini Soccer at Under 10 (7aside) & 11 (9aside) provide a fun atmosphere at central venues for our younger players. Older players compete in traditional eleven

aside matches at Under 12, 13, 14, 15, 16, 17 & 19 age groups. The majority of finals in 2014 were played at the homes of the two senior clubs in the city - giving finalists the chance to play in Irish League and League of Ireland stadia.

This year will see an expansion of our girl's tournaments with girl's mini soccer tournaments. Building on success of Under 13 (7aside) and Over 14, an under 11 competition will also be available subject to numbers. We also intend to add an Under 9 open competition (7aside).

Format

We believe in 'Football for all' so once the group stages in each age group have concluded, teams will be seeded into knockout tournaments according to performance in the group stages. This gives every team the chance to compete for and win a

trophy as reward for their week's efforts. The Plate finals in several age groups take place on 'Super Saturday' at the Brandywell complex.

All teams continue to play in classification matches - that way we guarantee a match per day.

Days

Expect to play over 5 days - either Monday - Friday or Tuesday - Saturday, depending on age group. If entries exceed expectation some age groups may run Monday - Saturday Boys mini soccer runs Monday - Friday. Days and duration of girl's competitions to be confirmed once interest gauged. For clarification on exact timetable, check out www.foylecup.com or email us at foylecup@me.com

2016

Providing great football for all

Join in excess of 200 youth football teams playing over 700 games across one special week in July 2016

The 2014 tournament attracted 220 teams across all age groups and we intend the 2016 competition to provide tournament football for a similar number of teams.

The format and structure of the Foyle Cup tournament is one which gives every participant the chance to play as much football as possible as well as experience all that Derry City has to offer.

It is our intention to make 2016 the biggest and best Foyle Cup ever



and therefore teams from across the globe are invited to visit Derry.

Venues

Over 25 local venues will be used including Derry City's Brandywell Stadium, Institute's Riverside Stadium as well as local community based playing fields across the area. We can guarantee friendly spectators, excellent surfaces and a chance to see many parts of the

North West of Ireland without extensive travel times.

Getting Here

Northern Ireland is served by flights into City of Derry Airport, Belfast International Airport and George Best City Airport. Scheduled air services operate from nearly all major airports in Britain. There are also many direct flights from European cities. Major airlines operate scheduled services from the USA and Canada to Belfast International Airport, approximately 60 miles from Derry, via UK and Republic of Ireland airports.

Additionally there is also a flight direct from New York to Belfast. Northern Ireland is served by fast ferry connections with Scotland, England and the Isle of Man. City of Derry Airport is situated just six miles outside the city and is served by many British airports including Glasgow, Liverpool, Birmingham and London Stansted as well as several Spanish and Portuguese locations.

Travelling to Derry by car takes around one and a half hours from Belfast and around three hours from Dublin.

There are frequent bus connections to the city. The Maiden City Flyer between Belfast and Derry operates every 30 minutes from Monday to Saturday. The Goldline Express from Dublin operates services to Derry every two hours daily. There are also frequent trains to Coleraine with connections to Portrush.

Accommodation

Fantastic accommodation rates are available in local hotels and in particular at the University Halls of residence where special Foyle Cup rates apply. Derry City and surrounding areas can provide visiting teams with a full range of accommodation standards. Once we



have confirmed teams at the end of January 2016, we will then allocate accommodation in February and March to all who need it. An indication of prices is below:

- Hotels (3-4*). B&B from £34.50 per person sharing. Lunch £7 & Evening Meal £11
- University - £20 + VAT. Meals are available at local Brunswick Superbowl and are competitively priced depending on needs of teams.

All prices are provisional subject to final quotation from venues.

Activities

For ideas how to spend your time between matches have a look at www.derryvisitor.com for fun ideas.

Why not consider:

- Walking Tour of City Walls
- Tower Museum
- League of Ireland football
- Possibility of Europa League
- Donegal's Beaches
- Local Swimming Pools
- 2 superb cineplexes
- Giant's Causeway
- Heritage Trails

Entry criteria 2016

Summary of selection process

The tournament is open to both club and representative teams. Key is that any club is affiliated to a recognised league which is in turn registered to a National Football Association. Similarly representative teams should either represent a league, county or a group of registered clubs combining for the tournament. All teams are also required to have adequate 3rd party insurance in place in order to compete.

To apply please ensure the entry form on Page 8 is completed and returned by December 31st. Entry fee of £150STG must be included or in the instance of faxed or emailed forms, the fee should follow within 7 days. No team will be accepted unless the fee is received.

In the 11 aside age groups, a maximum of 16 teams will be accepted per age group as this avoids any teams having to play twice on one day. If 16 entries are not received then the tournament will be created with 12, 8 or 4 teams as appropriate.

In mini soccer, up to 32 teams will be accepted, again in groupings of 4 teams. This is because of the shorter nature of matches and the intention to play all games on 3G surfaces. The girl's tournaments will run if 8 teams enter, but up to 16 will be accommodated. However the exact nature of these age groups will depend on available pitches which are being sourced now.

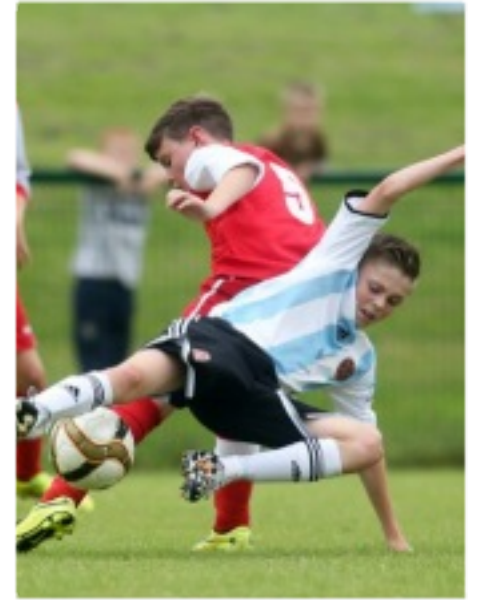
Where entries exceed the maximum numbers indicated above, entry criteria will be applied to prioritise entries. e.g. The host Derry Colts team, previous Foyle Cup winners, teams availing of bed nights, teams commuting to and from the city each day, teams affiliated to Irish League and Airtricity League sides, representative league or county sides. However the intention is to continue to open the competition to as wide a range of teams as possible within the maximum permitted by logistical issues like pitch numbers.

On the Monday we intend to run a Special Olympics themed day, subject to entries. This will allow competitors with a range of disabilities to compete in the Foyle Cup. There is no entry fee for this category and teams wanting to compete should contact organisers at foylecup@me.com directly to discuss options and format.

The Foyle Cup tournament is supported by Derry City Council, Department of Culture Arts and Leisure, Sport N. Ireland, Dept for Social Development, Northern Ireland Tourist Board, Limavady Borough Council, Strabane District Council, Hughes Insurance, Legea, PSNI, E&I Engineering, Brunswick Superbowl and Derry Credit Union.

UNDER 10	UNDER 11	UNDER 12	UNDER 13	GIRLS	UNDER 14
		 Donegal Schoolboys	 Donegal Schoolboys	 Donegal Schoolgirls	
UNDER 15	UNDER 16	UNDER 17	UNDER 19	LADIES	
					

Match Formats



Venues

Matches will be played at over 25 venues in Derry City, County Derry & Tyrone in Northern Ireland as well as several pitches in County Donegal in Ireland. Venues are selected based on accessibility to local communities, ensuring that the festival of football is a truly cross-community event.

Group Stages

Teams are initially placed in groups of 4 teams, playing each other team once over 3 days. Teams are then placed in knock out stages based on their finishing places. All teams will play games for 5 consecutive days in 11 aside

age groups and 4 days at mini soccer. The new girl's tournaments are likely to be 3 or 4 days depending on entry numbers.

Knock Out Stages

Every team will play the same number of games. Following group stages teams play in knockout tournaments, seeded against teams of similar ability in the groups. Classification games ensure teams play right through to the final day.

Referees

All matches in the main tournaments (Under 12 and above) will be officiated by a team of 3 officials - 4 for Cup Finals. Mini Soccer games will have one nominated official.

A panel in excess of 90 referees will be convened from local and foreign football associations - with registered referees coming from Scotland, England, Hungary, Netherlands, Malta, USA & Canada at their own expense in past seasons.

Any referee interested in participating should contact the referee's committee by email in the first instance via referees@foylecup.com

AGE GROUP - DATE OF BIRTHS (PLEASE CHECK)		
	Under 19 Mini Soccer Born on or after 1/1/2007	Under 16 Born on or after 1/1/2000
	Under 10 Mini Soccer Born on or after 1/1/2006	Under 17 Born on or after 1/1/1999
	Under 11 Mini Soccer Born on or after 1/1/2005	Under 19 Born on or after 1/1/1997
	Under 12 Born on or after 1/1/2004	Girls Under 11 Mini Soccer Born on or after 1/1/2005
	Under 13 Born on or after 1/1/2003	Girls Under 13 Mini Soccer Born on or after 1/1/2003
	Under 14 Born on or after 1/1/2002	Ladies - Over 14 Born on or after 20/7/2002
	Under 15 Born on or after 1/1/2001	



Matches

Hughes Insurance Foyle Cup matches are scheduled in such a way that spectators are able to take in 3 games per day. In 2016, games will kickoff at 3pm, 5pm & 7pm Monday to Thursday and 1pm, 3pm& 5pm on Friday. Finals are split between 7pm Friday and 12noon - 4pm Saturday . The final classification games for the Under 12/14/16 age groups precede the Saturday finals at 10am & 11am. All other age groups finish on Friday. Several venues have 2 or even 3 simultaneous games - adding to the already unique atmosphere.

Duration of games are as follows:

- Mini Soccer - 15 each way
- Under 12-15 - 25 each way
- Under 16,17/ladies- 30 e/way
- Under 19 - 35 each way

In knockout matches, all drawn games are decided by kicks from the penalty mark.

Opening Parade

Each year, a parade of all teams takes place on the Tuesday morning (around 11am) and it never fails to bring Derry City Centre to a standstill. This carnival of colour is a highlight of the week for many and with the new route taking in many of Derry’s major landmarks - the new peace bridge which connects communities in the city onto the famous Walls of Derry before finishing in Guildhall Square. Anyone attending is advised not to miss the formal opening of the competition.

Social Element

The Hughes Insurance Foyle Cup each year sees old friendships reacquainted and many new friendships start. Whether it be the carnival atmosphere of the Opening Parade, the Olympic Village style

gathering of competitors in the University Halls of Residence and local hotels or simply mingling at the matches - the one thing we can guarantee is that people will have fun and enjoy Ireland’s legendary ‘craic.’ Our website updates, Facebook community and Tweets from many games extends this community feel into the global online arena. We pride ourselves on being ‘the friendly face of football’ and the tournament is organised to ensure this rings true each and every year.



HUGHES INSURANCE FOYLE CUP 2016 - ENTRY FORM

APPLY NOW BY RETURNING THIS FORM
 Entries strictly close on December 31st, 2015

Team Name

Note this is what will appear on website and fixture lists

Please select all relevant age groups in boxes below. If you wish to enter multiple teams in an age group (normally mini-soccer) place relevant number in box.

Under 9 Born on after 1/1/2007		Under 14 Born on or after 1/1/2002		Ladies Born before 20/7/2002	
Under 10 Born on or after 1/1/2006		Under 15 Born on or after 1/1/2001		GIRLS Under 11 Born on or after 1/1/2005	
Under 11 Born on or after 1/1/2005		Under 16 Born on or after 1/1/2000		GIRLS Under 13 Born on or after 1/1/2003	
Under 12 Born on or after 1/1/2004		Under 17 Born on or after 1/1/1999			
Under 13 Born on or after 1/1/2003		Under 19 Born on or after 1/1/1997			

Please complete the details below. These are the people that the Committee will liaise with in respect to entry and dialogue will not be possible with other individuals. It is important that the name(s) listed below are available to confirm details etc... as repeated non response could see an entry revoked.

Primary Contact		Reserve Contact	
Home Phone Number		Home Phone Number	
Mobile Phone Number		Mobile Phone Number	
Email address		Email address	
Home Address		Home Address	

HUGHES
INSURANCE

FOYLE CUP

Please send payment of £150 sterling per age group and/or team entered to address below with a copy of this form. Payment will be refunded to non-successful applicants.

Michael Hutton, Foyle Cup Chairman, 8 Papworth Avenue, Derry, Northern Ireland BT48 8PT
 Email any questions to michael-hutton@lineone.net or foylecup@me.com
 or call +44 2871 359734